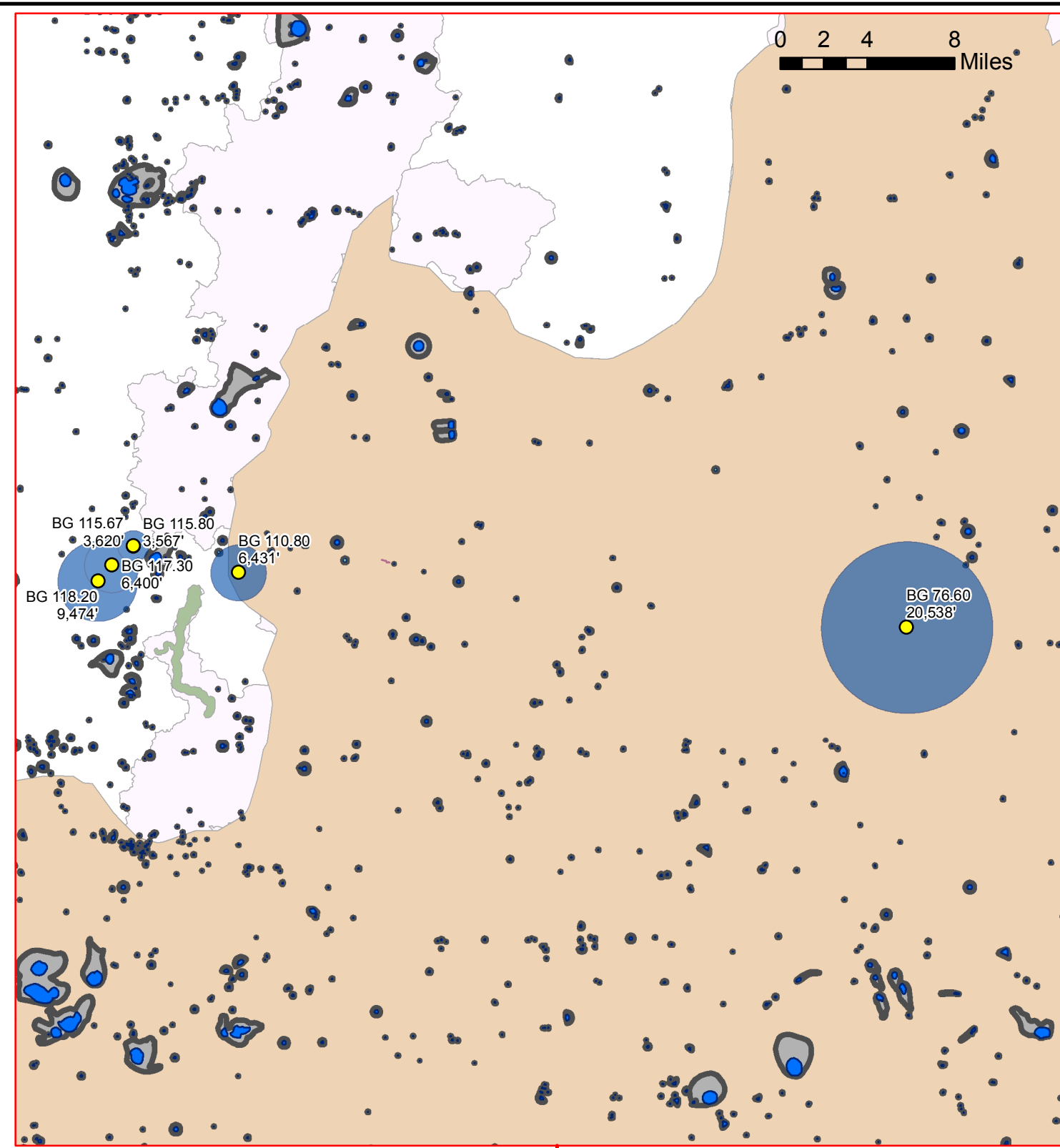
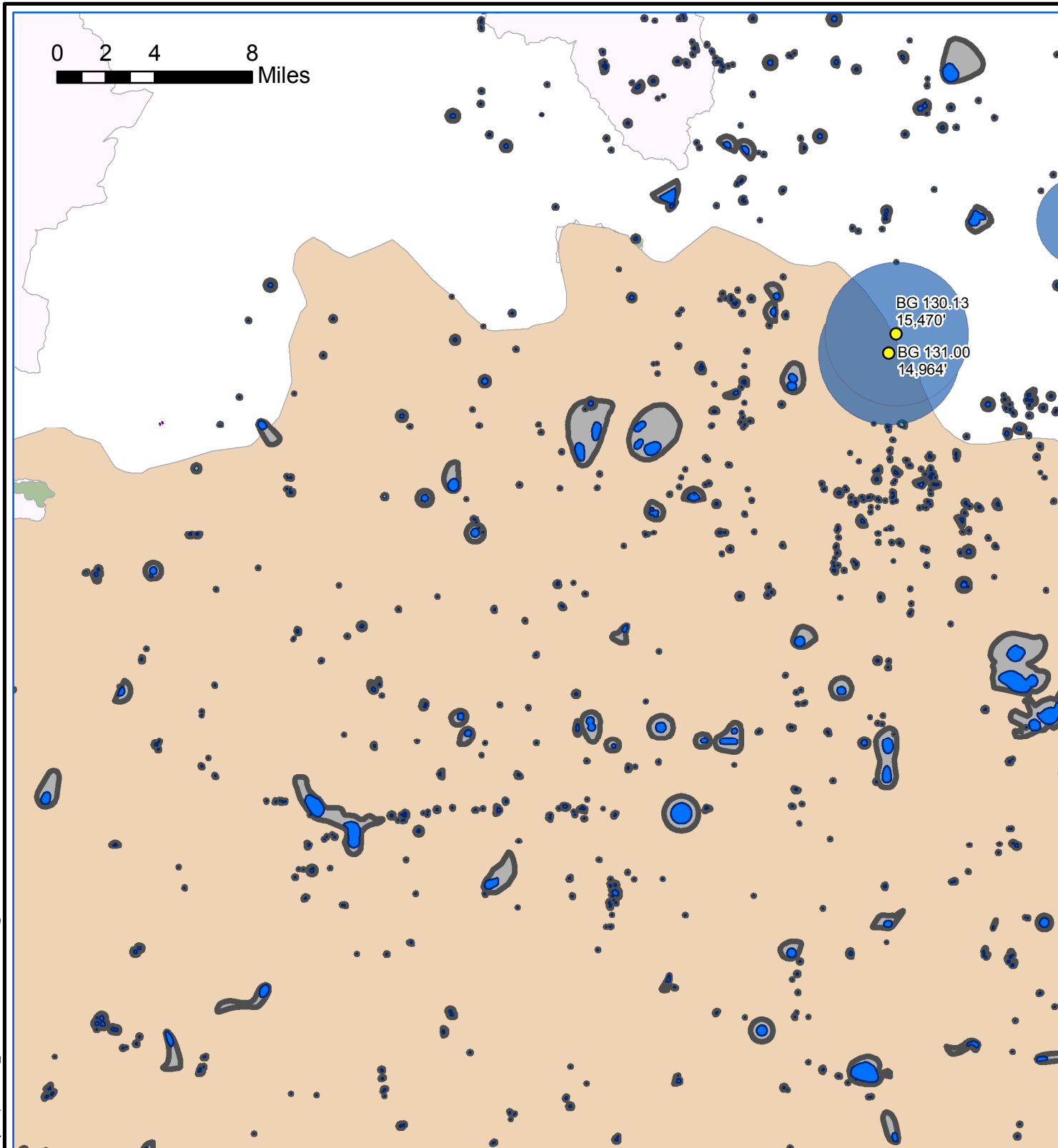










# ATTACHMENT 9

## Drinking Water Resources Mapping



**Legend**

-  IMZ Buffer
-  SWPA: Inner Management Zone (1-Year Travel Time)
-  Drinking Water Source Protection Area (5-Year Travel Time)
- SWPA: Surface Water**
-  Corridor Management Zone
-  Ohio River-Source Water Area Watershed
-  Source Water Area Watershed

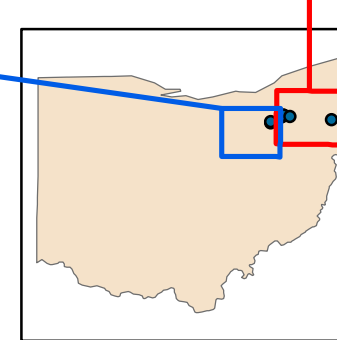
**NOTE:**

The Inner Management Zone is the surface and subsurface area surrounding a public water supply well(s) that will provide water to the well(s) within one year as delineated or endorsed by the agency under the wellhead protection program and the source water assessment and protection program.

A Drinking Water Source Water Protection Area for a public water system using ground water is the surface and subsurface area surrounding a public water supply well(s) which will provide water from an aquifer to the well(s) within five years as delineated or endorsed by the agency under Ohio's Wellhead Protection and Source Water Assessment and Protection Programs

The Corridor Management Zone (CMZ) is the surface and subsurface area where the potential for drinking water contamination warrants delineation, inventory, and management because of its proximity to a public water system intake.

The Source Water Area is the entire portion of the Ohio River Basin upstream from the surface water intake.



CSX, TRANSPORTATION  
 NATIONAL GATEWAY

**DRINKING WATER RESOURCES  
 MAPPING**

