



ATTACHMENT 2

Limits of Disturbance

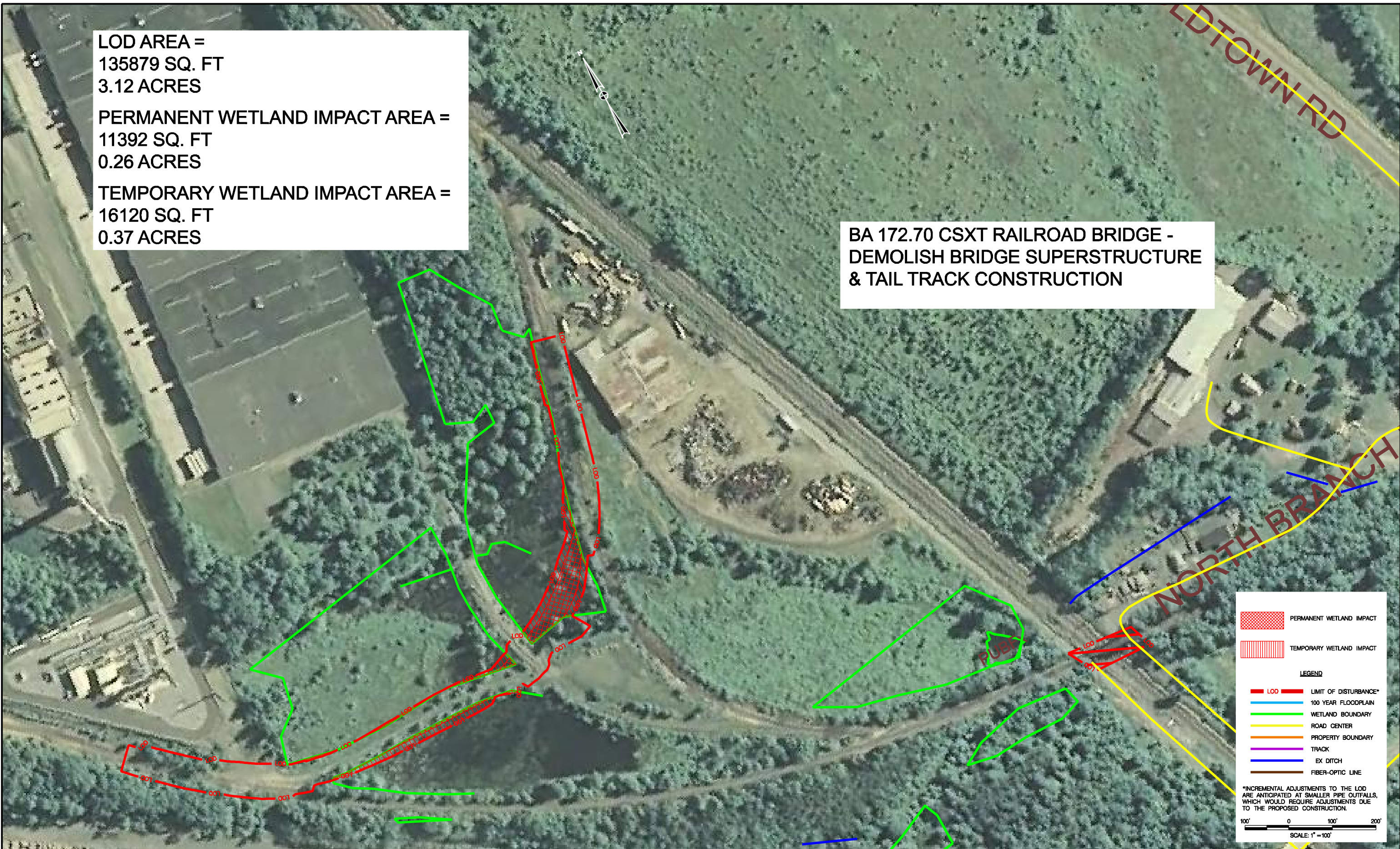
LOD AREA =
135879 SQ. FT
3.12 ACRES

PERMANENT WETLAND IMPACT AREA =
11392 SQ. FT
0.26 ACRES

TEMPORARY WETLAND IMPACT AREA =
16120 SQ. FT
0.37 ACRES

**BA 172.70 CSXT RAILROAD BRIDGE -
DEMOLISH BRIDGE SUPERSTRUCTURE
& TAIL TRACK CONSTRUCTION**

Tuesday, July 06 11:55 AM AT 04:15548RM DCE_HIGHWAYS\6814_Natl Tonal Gateway_BA172.70 Mexico Md\ENR\Drawings\Sheet\DD\PHD-00_BA172.70.dgn



LEGEND

- PERMANENT WETLAND IMPACT
- TEMPORARY WETLAND IMPACT
- LOD LIMIT OF DISTURBANCE*
- 100 YEAR FLOODPLAIN
- WETLAND BOUNDARY
- ROAD CENTER
- PROPERTY BOUNDARY
- TRACK
- EX DITCH
- FIBER-OPTIC LINE

*INCREMENTAL ADJUSTMENTS TO THE LOD ARE ANTICIPATED AT SMALLER PIPE OUTFALLS, WHICH WOULD REQUIRE ADJUSTMENTS DUE TO THE PROPOSED CONSTRUCTION.

100' 0 100' 200'
SCALE: 1" = 100'

REVISIONS			
NO.	DESCRIPTION	BY	DATE

DRAFT
07/06/10

AECOM
260 S. Broad Street, Suite 1500
Philadelphia, Pennsylvania 19102

How tomorrow moves **[CSX]**

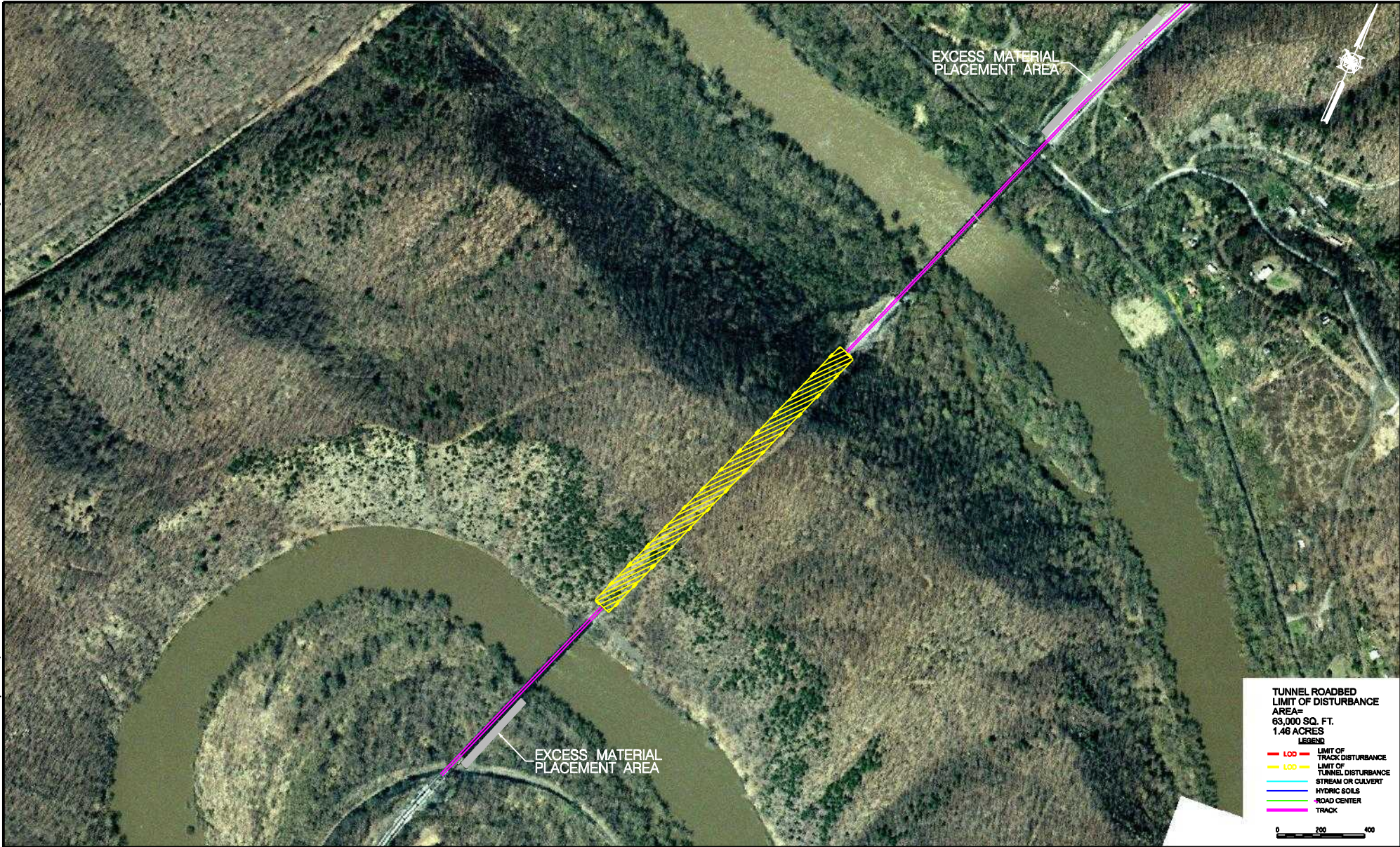
SCALE: 1"=100'
DATE: 07/06/10
DRAWN: JAD
CHK'D

VAL. SEC. DIVISION:
SUBDIVISION:
PROJECT ID:

CSX NATIONAL GATEWAY
MEXICO, MD
CSXT RAILROAD BRIDGE

SHEET NO. OF
DWG NO.

8/21/2009 11:43:35 PM P:\16004814_CSTT_DEV\Copy\101\Project\ENVIRONMENTAL_GATEWAY\1010-7110_Series - 13_Railroad_Tunnel\1010-7110_Graham_LOD_R1.dgn



TUNNEL ROADBED
 LIMIT OF DISTURBANCE
 AREA=
 63,000 SQ. FT.
 1.46 ACRES

- LEGEND
- LOD LIMIT OF TRACK DISTURBANCE
 - LOD LIMIT OF TUNNEL DISTURBANCE
 - STREAM OR CULVERT
 - HYDRIC SOILS
 - ROAD CENTER
 - TRACK



REVISIONS			
NO.	DESCRIPTION	BY	DATE

10% CONCEPTUAL LOD

AECOM
 280 S. Broad Street, Suite 1500
 Philadelphia, Pennsylvania 19102

SCALE: AS NOTED		VAL. SEC.	DIVISION	BALTIMORE
DATE: 8/31/09		SUBDIVISION: CUMBERLAND		
DRAWN:		PROJECT ID:		
CHK: D				

HOW SOMETHING MOVES **CSX**
CSX NATIONAL GATEWAY
 BA 145.80
 GRAHAM TUNNEL
 MAGNOLIA, MD

SHEET NO:	OF
DRG NO.	